

ASSEMBLY INSTRUCTIONS FREEZERS AND COLD ROOMS

Version A1.1



Preparations

Check the goods and packaging upon delivery.
Report transport damage to the carrier immediately.

Notice! Forklift/loader must be in place for unloading.



Scan to download assembly
instructions



FINNEBÄCKS AB
Edsgatan 3
671 70 Edane
E-mail: office@finnebacks.se
Telephone: +46(0)570-727770
www.finnebacks.se

**SWEDISH DESIGN,
MANUFACTURING,
AND QUALITY**

ASSEMBLY INSTRUCTIONS

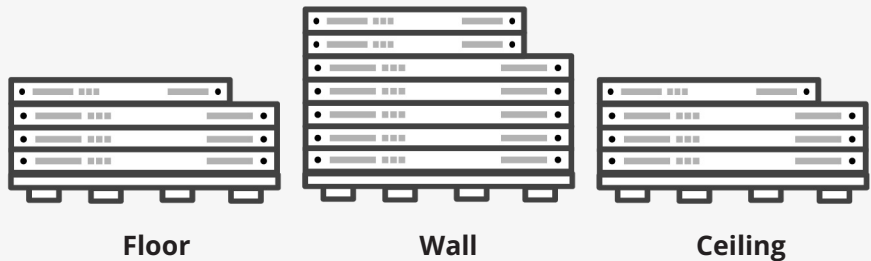
PREPARATIONS ASSEMBLY LOCATION



Make sure you have a flat surface without slope for the installation of cold and freezer rooms. This is especially important in the doorway to ensure that the door seals and runs smoothly.

Floor and ceiling panels are labeled with tags for their respective panel types.

Sort the panels in assembly order: floor, walls, ceiling, for a smooth assembly process.

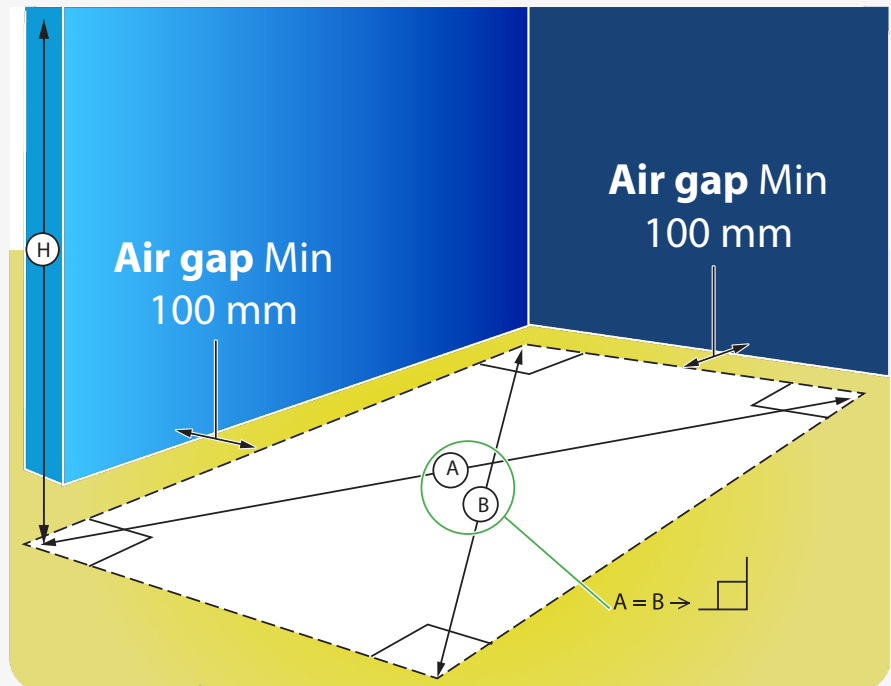


DIMENSIONING

Tools: Measuring instruments, laser/ spirit level, chalk cord.

Preperations: Clean and dry installation site

Measure and mark the position of the rooms.



SUPPORT, DOCUMENTATION, AND ACCESSORIES

Visit our website and YouTube channel for manuals, documents, accessories, and assembly videos.

Website:
www.finnebacks.se

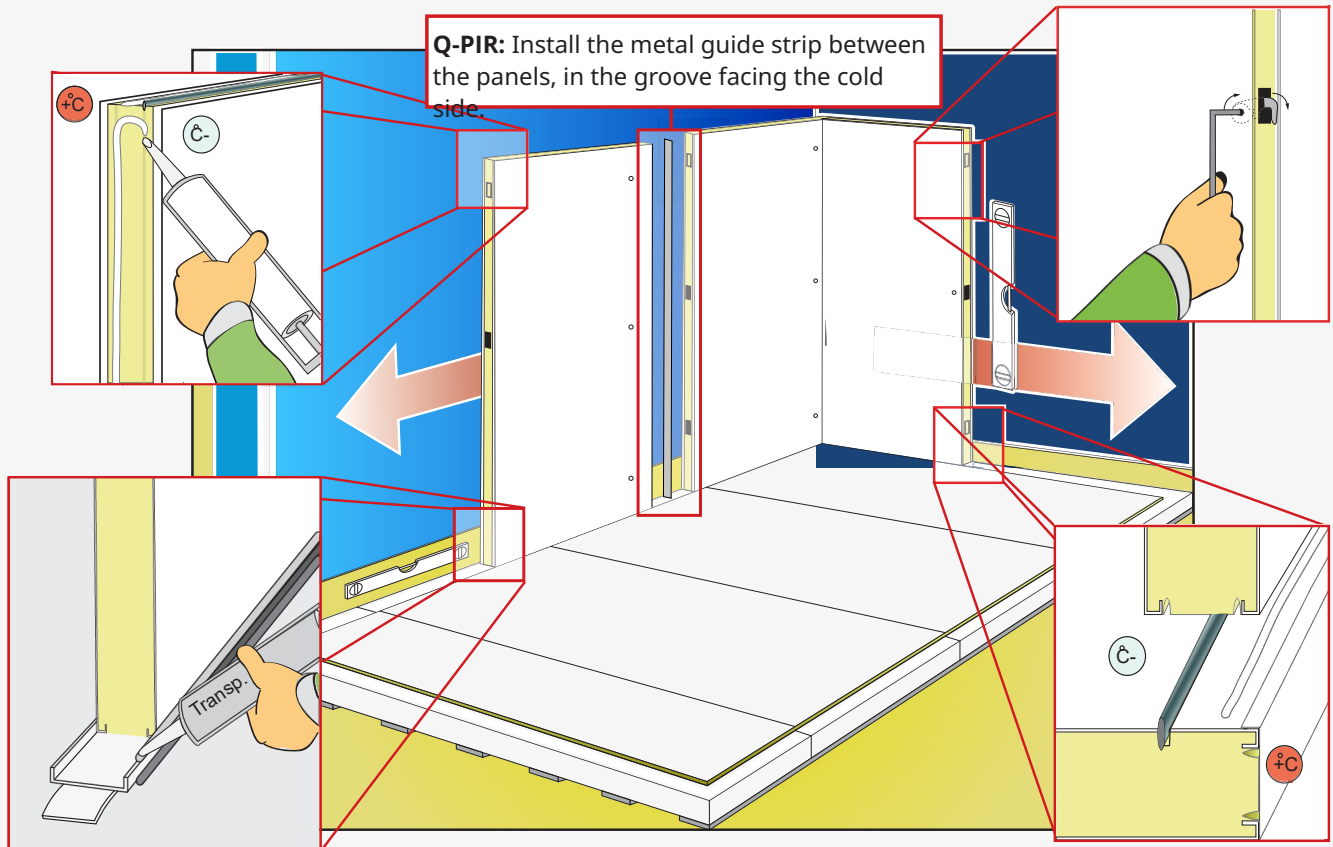
Youtube:
www.youtube.com/@finnebacksab8280



ASSEMBLY INSTRUCTIONS

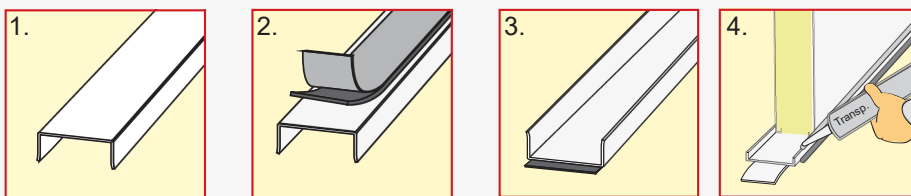
FLOOR AND WALL PANELS

Tools: Spirit level, hex key, sealant dispenser gun, screwdriver, ladder.



Sealing, especially on the warm side, is crucial to prevent moisture intrusion. Clean the joints thoroughly before applying sealant to ensure good adhesion.

SILL ASSEMBLY TYPE 1

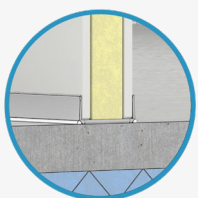


1. Turn the profile with the flat side facing up

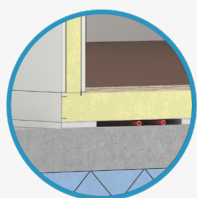
2. Attach the gray butyl tape. Remove the protective paper.

3. Place the profile on the floor, tape the floor with facing down, and clear sealant. press firmly.

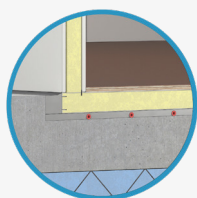
4. Seal against



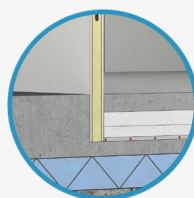
Type 1 Floor panel positioned in sill



Type 2 Ventilated floor. Battens c-c 300-400 mm

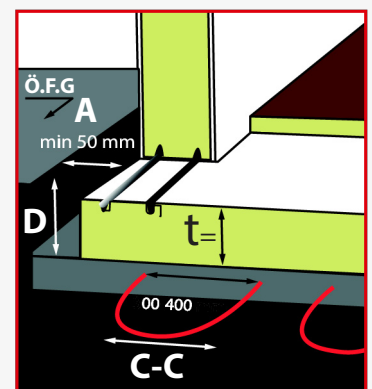


Type 3 Recessed floor. Heating cable c-c 300-400 mm



Type 4 Concrete overlay floor.

RECESSED FLOOR TYPE 3



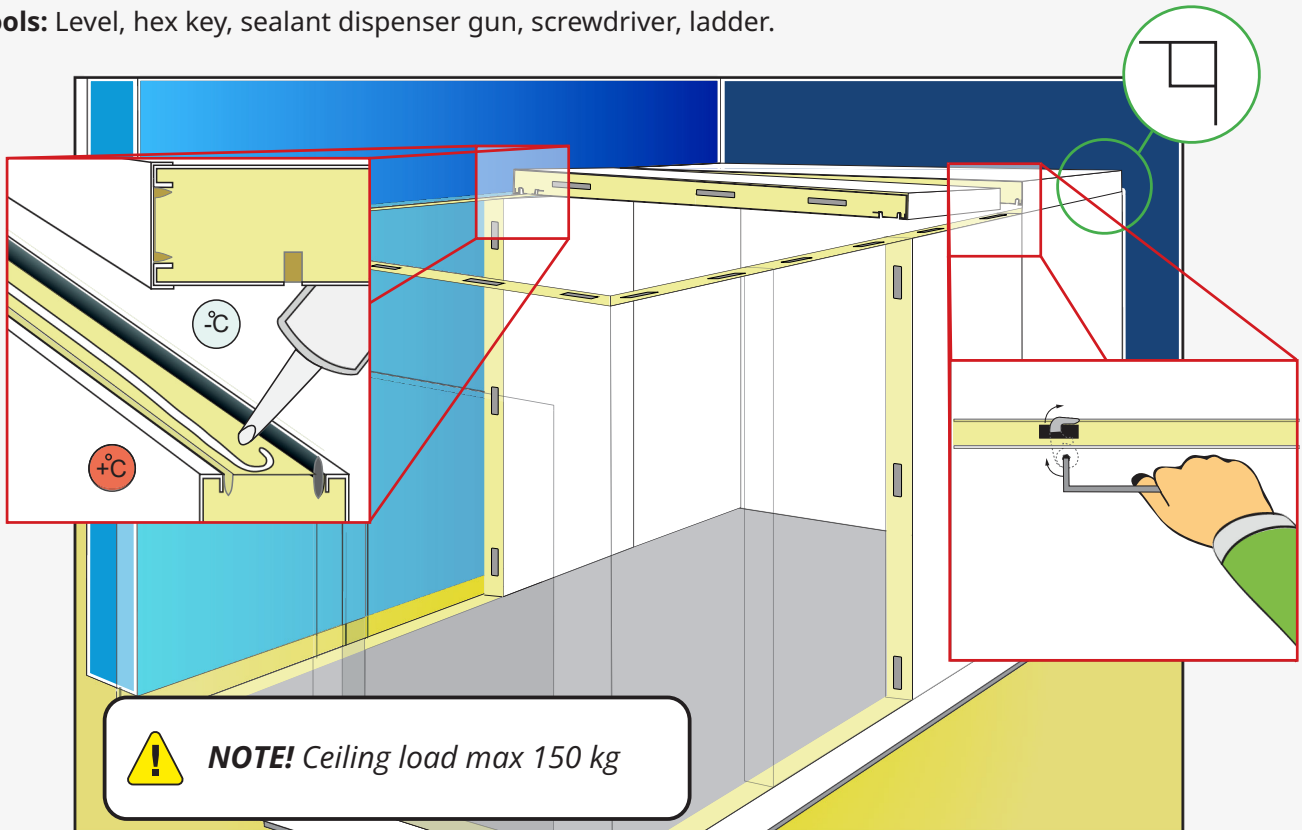
Ö.F.G(Top finished floor) The depth of the finished pit (D) is calculated from Ö.F.G, specifically for each project. See the project's current drawing. The outer top edge of the door threshold should be +5 mm from Ö.F.G.

A: Assembly gap min 50 mm.
D: Pit depth, see Work Drawing.
t: Floor panel thickness
C-C: Heating cable 300-400 mm.

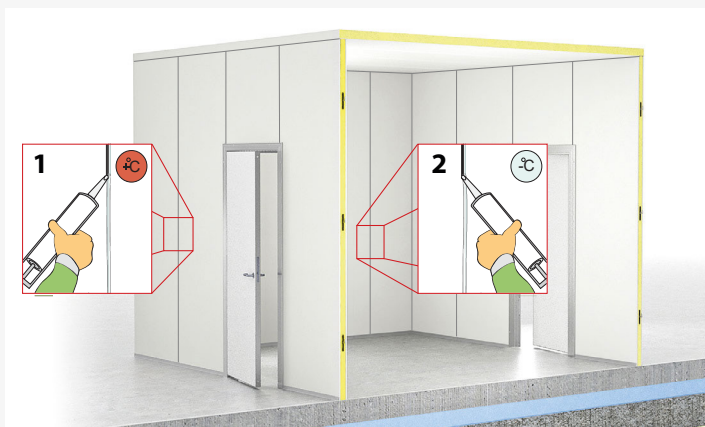
ASSEMBLY INSTRUCTIONS

CEILING INSTALLATION

Tools: Level, hex key, sealant dispenser gun, screwdriver, ladder.



JOINT SEALING

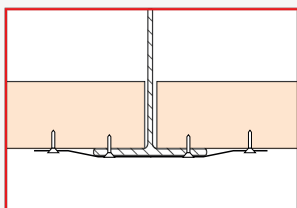


Joint Sealing

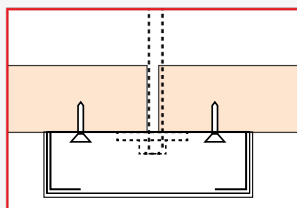
Sealing joints, particularly on the warm side, is critical to prevent moisture intrusion. Always ensure the joint areas are clean before applying any sealant.

1. On the warm side, apply white sealant to all joints.
2. Cold room: Also seal all joints on the cold side.
Freezer: Only seal joints in corners and between wall/ceiling on the cold side.

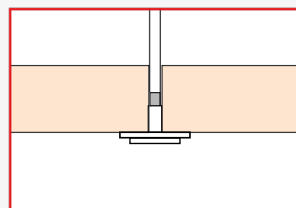
CEILING SUSPENSION



Exemple 1:
Ceiling suspension with ISO beam

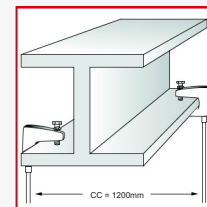


Exemple 2: Ceiling suspension with galvanized light beam

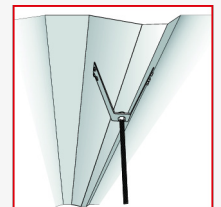


Exemple 3: ISO bolt and suspension rod

CEILING SUSPENSION



Ceiling suspension:
Beam clamp

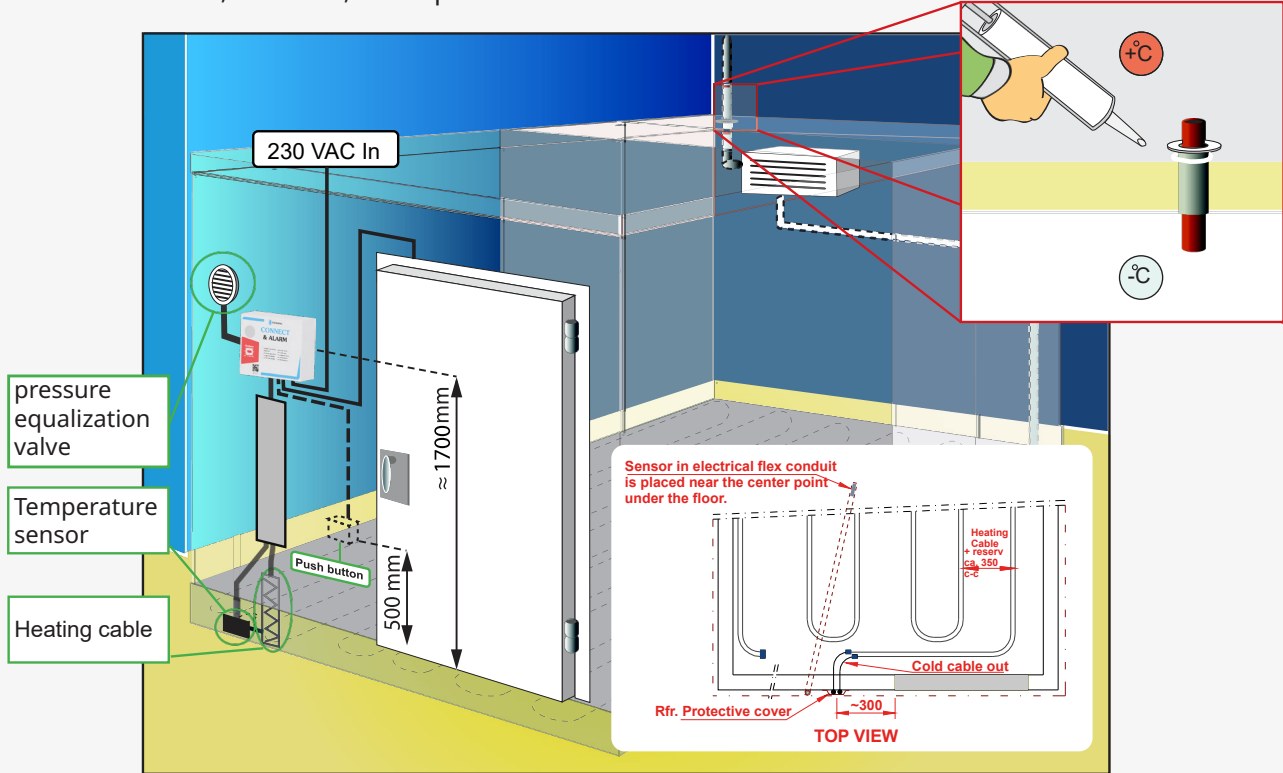


Ceiling suspension:
TRP mount

ASSEMBLY INSTRUCTIONS

OTHER INSTALLATIONS

Tools: Screwdriver, hole saw, tin snips.



ACCESSORIES

Emergency alarm:

SE: Required by law below -5°C , see the manual for the specified alarm type.

Pressure Equalization Valve:

Prevents vacuum or overpressure in the room. $L = 800\text{--}1200$ mm, max 250 kg per level
Typically installed on the door side, but not directly above the alarm box or push button. Holes are made on-site.

Doors:

NOTE! A leveled finished floor on the opening side is essential; see the manual for the floor type.

Shelves:

$L = 1300\text{--}1500$ mm, max 150 kg per level

TECHNICAL DATA

Q-PUR

Thickness mm	Weight Kg/m ²	Temp		U-Value W/m ²	Insulation Type	Dens. Kg/m ²	λ 10 W/m, $^{\circ}\text{C}$
		Min	Max				
75	12,8-13,0	-10	+80	0,242	PUR	38	0,0214
100	13,6-13,9	-35	+80	0,189	PUR	38	0,0214
125	14,5-14,9	-40	+80	0,155	PUR	38	0,0214

Q-PIR

Thickness mm	Weight Kg/m ²	Temp		U-Value W/m ²	Insulation Type	Dens. Kg/m ²	λ 10 W/m, $^{\circ}\text{C}$
		Min	Max				
75	13,5-13,7	-10	+80	0,248	PIR	48	0,022
100	14,6-14,9	-35	+80	0,193	PIR	48	0,022
125	15,8-16,1	-40	+80	0,159	PIR	48	0,022

WBP - Plywood

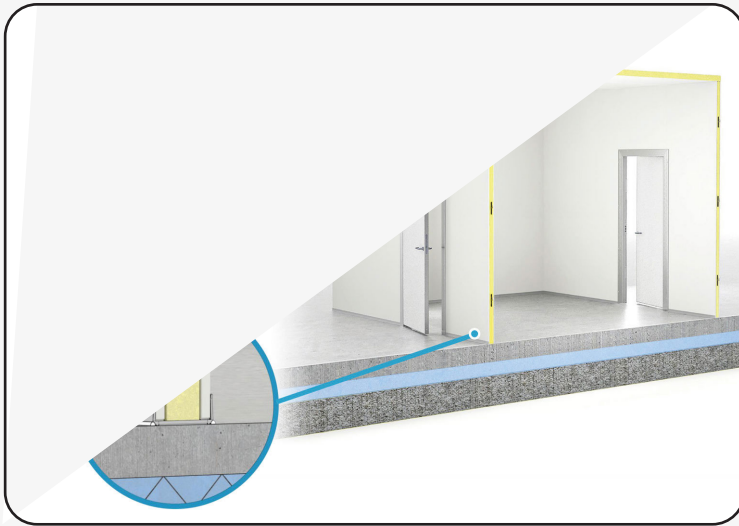
Thickness	Distributed load Kg/m ²	Point load Kg/cm ²
12 mm	3200	70
18 mm	4500	120
24 mm	6000	160



Fire rating B-s1, d0
Tested and classified
by RISE in Borås.

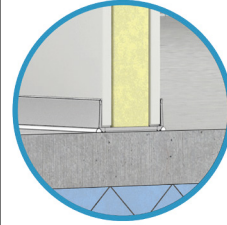
ASSEMBLY INSTRUCTIONS

FLOOR TYPE 1



FLOOR TYPE 1

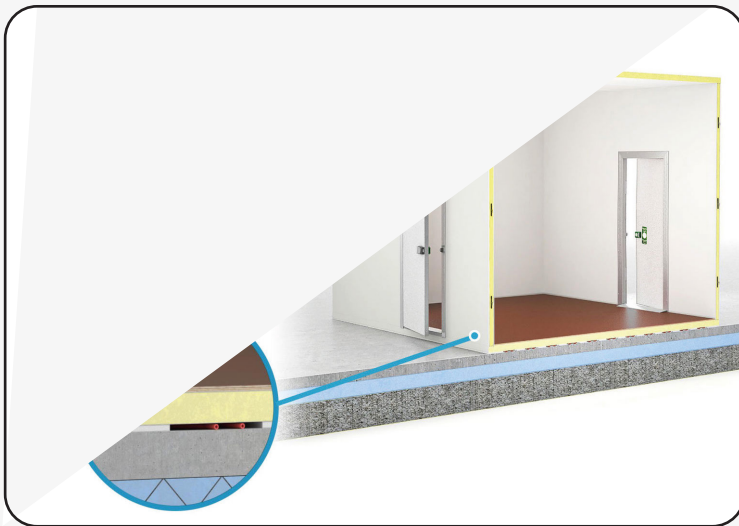
Wall panels on existing floor
Temp +2°C to +8°C



The room is installed on an existing floor with no preparatory work required. However, the floor must be level and free of any slope. Suitable only for positive room temperatures. This floor type supports foot traffic, pallet handling, and forklift use.

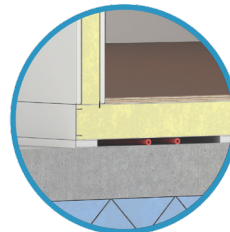
NOTE! Not suitable for wooden joists or floors with organic materials.

FLOOR TYPE 2



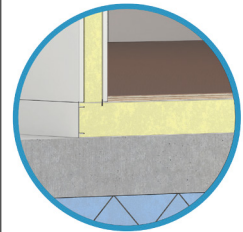
FLOOR TYPE 2

Insulated, ventilated floor
Temp 0°C to -25°C



FLOOR TYPE 2B

Insulated floor, directly on existing floor, max 4m²
Temp 0°C to -25°C



Insulated floor with ventilated air gaps and WBP plywood surface.

Requires no preparatory work but must be installed on a level, non-sloping floor. Larger freezer rooms are equipped with dual heating cables in the air gap. This floor type is suitable for foot traffic and light pallet handling but not for forklift traffic.

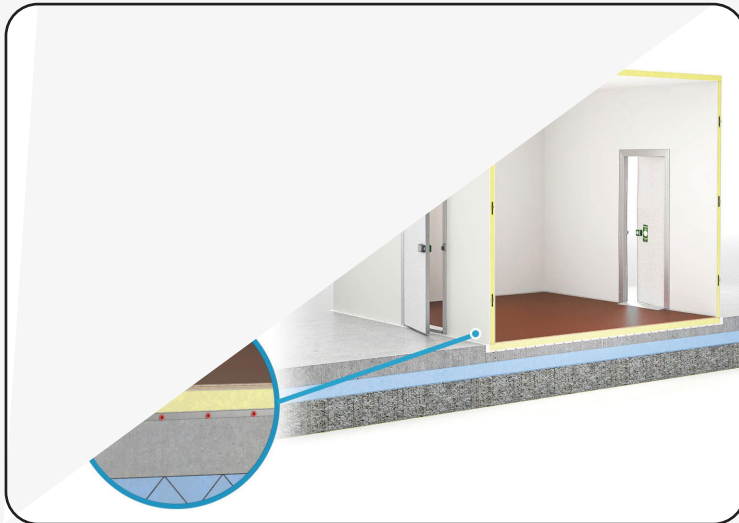
NOTE! For Floor Type 2B, the floor panel is placed directly on the existing floor without an air gap or heating cable. Suitable only for rooms up to 4m². Not recommended on wooden joists for either freezer or cold rooms.



The floor type is specified in the drawing included with the shipment. The drawing also contains project-specific installation instructions for the designated room.

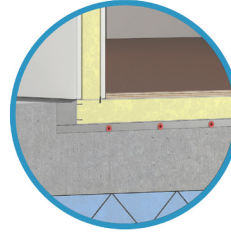
ASSEMBLY INSTRUCTIONS

FLOOR TYPE 3



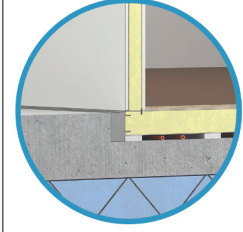
FLOOR TYPE 3

Insulated, recessed floor
Temp 0°C to -35°C



FLOOR TYPE 3B

Insulated, ventilated, and
recessed floor Temp 0°C
to -35°C



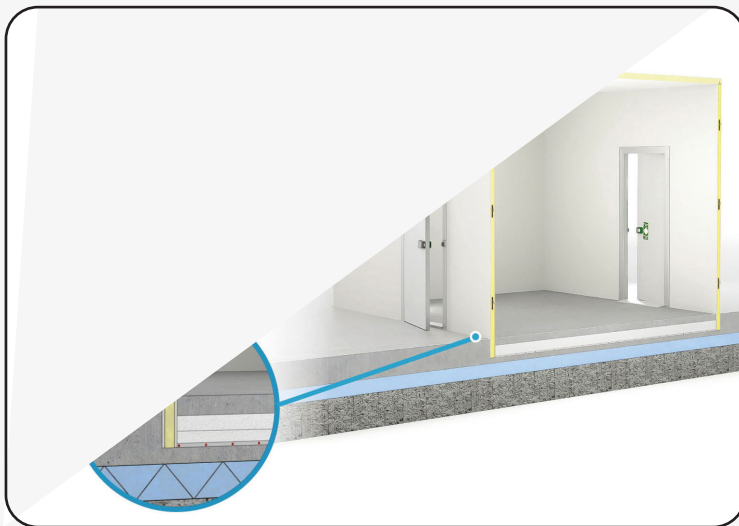
Recessed floor panel in a pit with WBP plywood as the surface layer.

Requires preparatory work and post-finishing.

Freezer rooms are equipped with dual heating cables embedded beneath the floor panel. This floor type is suitable for foot traffic and light pallet handling but not for forklift traffic.

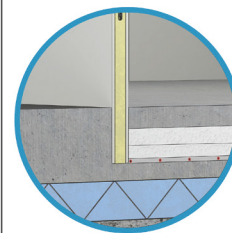
NOTE! For Floor Type 3B, ventilated battens with dual heating cables in the air gap are used instead.

FLOOR TYPE 4



FLOOR TYPE 4

On-site insulated, overlaid floor
Temp 0°C to -35°C



Concrete overlay floor with reinforcement.

Requires preparatory work and post-finishing.

Built in a pit with a double moisture barrier, foam insulation, and a concrete overlay, with embedded dual heating cables underneath.

This floor type is suitable for foot traffic, pallet handling, and forklift traffic.



The floor type is specified in the drawing included with the shipment. The drawing also contains project-specific installation instructions for the designated room.

ASSEMBLY INSTRUCTIONS

OPERATION AND MAINTENANCE INSTRUCTIONS

General:

- Seals must be checked regularly and repaired with anti-mold silicone if needed. Sealant must be applied to a clean, dry surface.
- Gaps between the cold room and surrounding walls must be well-ventilated to prevent mold and condensation damage.
- Surface coating scratches must be repainted immediately to avoid dirt buildup or corrosion.

Wall Sections:

- Cleaning: Keep surfaces clean using wet wiping or foam-based cleaning. (High-pressure cleaning directly on walls is not recommended.)
- Use commercially available cleaners with a pH between 6 and 9. Avoid strong solvents, hydrocarbons, or abrasive cleaners that may damage the coating. If unsure about a cleaner, test on a small area and rinse with water.

Floor Sections:

- Panel-insulated floors should only be cleaned with dry methods. In freezer rooms, beware of ice formation. Never hose down panel-insulated floors!
- Load-bearing capacity is determined case by case.
- Polyurethane insulation (PUR) has high compressive strength for distributed loads, but large point loads should be avoided. The material is unsuitable for dynamic loads.
- Typically, electric heating cables (220V, 15-20 W/m²) are installed under the floor. Test cable functionality regularly (at least twice a year).

Ceiling Sections:

- Sections are self-supporting at the chosen span. Avoid additional loads beyond their own weight, max 150 kg.
- Cleaning: Keep surfaces clean using wet wiping or foam-based cleaning. (High-pressure cleaning directly on ceilings is not recommended!)

Freezer Rooms General:

- If ice forms inside (usually on the ceiling), check the defrost settings. (A common cause is the cooling fan starting too early.) Also, check for leaking warm air or moisture introduced with goods.
- Electric pressure equalization valves (220V) are installed to balance pressure between rooms. Regularly check valve functionality.

Emergency Alarm:

- Swedish law requires a certified, functional emergency alarm in freezer rooms. The alarm must switch to battery backup in case of power failure. This is a critical safety requirement and the employer's responsibility.
- Regularly test the alarm function, see the manual.

SUPPORT



FINNEBÄCKS AB

Edsgatan 3
671 70 Edane
Telefon: +46(0)570-727770
E-post: office@finnebacks.se

www.finnebacks.se/support

A product from
 FINNEBÄCKS